

# Assembly Instructions for Fire Tables using Key Valve Kits



## For Fire Table SKUs 86099, 298098, & 298099

Due to several combinations of base and top, Lloyd Flanders provides a bracket assembly set with each Fire Table. Not every fire table will require all hardware, use the set of instructions that works for your specific top and base.

**Attach Top to Base** - The base and top must be securely fastened together, using the fire table without connecting the base to the top is not recommended.

1. Lay the top upside-down on a clean, flat surface.
2. Center the upside-down base on the top.
3. If there are brackets on the base, confirm they line up with the assembly holes in the top.

### If brackets and holes align:

A1. Attach the base to the top using the provided 1/4" washers and 10-12 x 3/4" bolts.

### If there are no brackets, or they do not align:

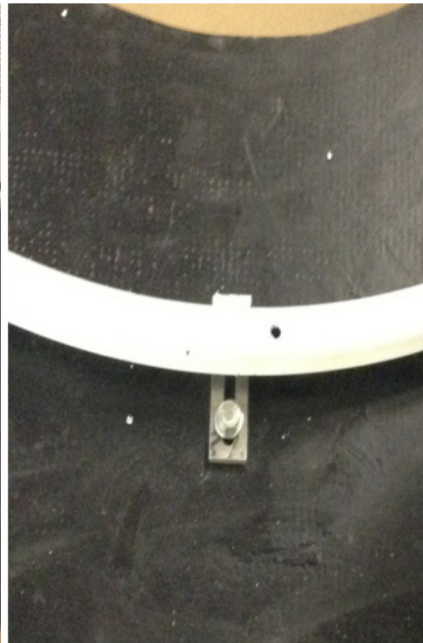
B2. Using the 4 provided brackets, place under the base frame and align with the holes on the top.

B3. Use the 10-12 x 3/4" self tapping screws to attach the brackets to the base.

B4. Attach bracket to top using 1/4" washers and 10-12 x 3/4" bolts.



Example: bracket attached to inside of base.



Example: Bracket attached to top.